

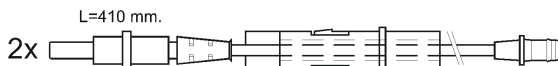
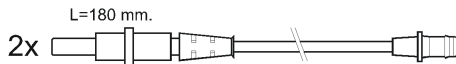
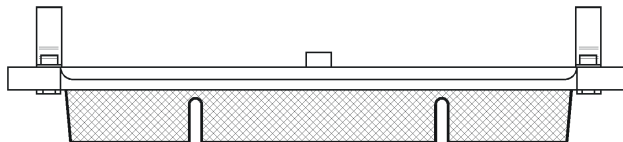
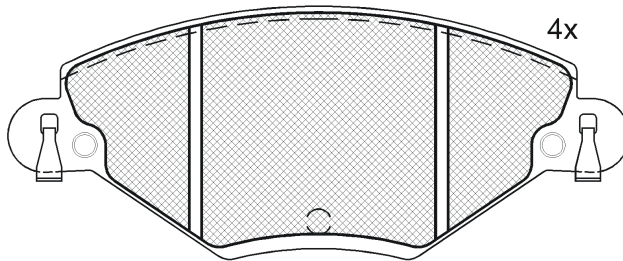
LISTA DE APLICACIONES - BUYERS GUIDE

181419-701



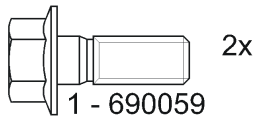
Qty: 300 Peso: 1.719

O.E.M.	MAKE
4252.15	CITROËN
4252.48	CITROËN
4252.88	CITROËN
4253.46	CITROËN



1 - Ref. 610311 E

181419-701



181419-701

E 9 90R-01111/592



Bosch

148.8x60.6x18

WVA
23274
23277

MAKE
CITROËN



Trac.	CC	Kw	CV
-------	----	----	----



Front / Rear

CITROËN

C5 (DE_) 06.01-08.04						Estate (Large family car-D Segment)		
1.8 16V (6FZ (EW7J4))		Petrol	FWD	1749	85	115	06.01-08.04	*
2.0 16V (RFN (EW10J4))		Petrol	FWD	1997	100	136	06.01-08.04	*
2.0 16V (RFJ (EW10A))	-12/08	Petrol	FWD	1997	103	140	09.04-	*
2.0 16V HPI (RLZ (EW10D))		Petrol	FWD	1997	103	140	06.01-08.04	*
2.0 Hdi (RHY (DW10TD))		Diesel	FWD	1997	66	90	06.01-08.04	*
2.0 Hdi (RHS (DW10ATED))		Diesel	FWD	1997	79	107	06.01-08.04	*
2.0 Hdi (RHZ (DW10ATED))		Diesel	FWD	1997	79	107	06.01-08.04	*
2.0 Hdi (RHZ (DW10ATED))		Diesel	FWD	1997	80	109	06.01-08.04	*
2.0 Hdi (RHR (DW10BTED4))	-12/08	Diesel	FWD	1997	100	136	09.04-	*
C5 (DC_) 03.01-08.04						Fastback (Large family car-D Segment)		
2.0 16V (RFN (EW10J4))		Petrol	FWD	1997	100	136	03.01-08.04	*
2.0 16V (RFJ (EW10A))	-12/08	Petrol	FWD	1997	103	140	09.04-	*
2.0 16V HPI (RLZ (EW10D))		Petrol	FWD	1997	103	140	03.01-08.04	*
2.0 Hdi (RHY (DW10TD))		Diesel	FWD	1997	66	90	03.01-08.04	*
2.0 Hdi (RHS (DW10ATED))		Diesel	FWD	1997	79	107	03.01-08.04	*
2.0 Hdi (RHZ (DW10ATED))		Diesel	FWD	1997	79	107	03.01-08.04	*

LISTA DE APLICACIONES - BUYERS GUIDE

2.0 Hdi (RHZ (DW10ATED))	Diesel	FWD	1997	80	109	03.01-08.04	*
--------------------------	--------	-----	------	----	-----	-------------	---